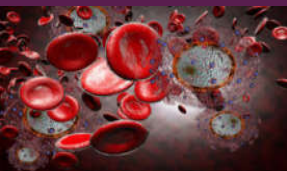


Did you know that 1 in 2 sexually active people will get an STI by age 25--and most won't even know it?



GYT

GET YOURSELF TESTED AND TALKING

ABSTINENCE

SMART PREVENTION EFFECTIVE
 WILLPOWER HEALTH FUTURE WAIT
 RELATIONSHIP CONFIDENCE PROUD
 SECURITY GOALS DISCIPLINE
 ACTION BEHAVIOR CHOICE RESPONSIBLE
 AVOIDANCE SAFE KNOWLEDGE
 SELF-RESTRAINT DEDICATED WORTHWHILE

IT'S YOUR BODY. TAKE CONTROL.

1 Corinthians 6:18 Flee fornication. Every sin that a man doeth is without the body; but he that committeth fornication sinneth against his own body. Nevertheless, to avoid fornication, let every man have his own wife, and let every woman have her own husband.

What? know ye not that he which is joined to an harlot is one body? for two, saith he, shall be one flesh.~1 Cor. 6:16.

Ephesians 5:5 - For this ye know, that no whoremonger, nor unclean person, nor covetous man, who is an idolater, hath any inheritance in the kingdom of Christ and of God.

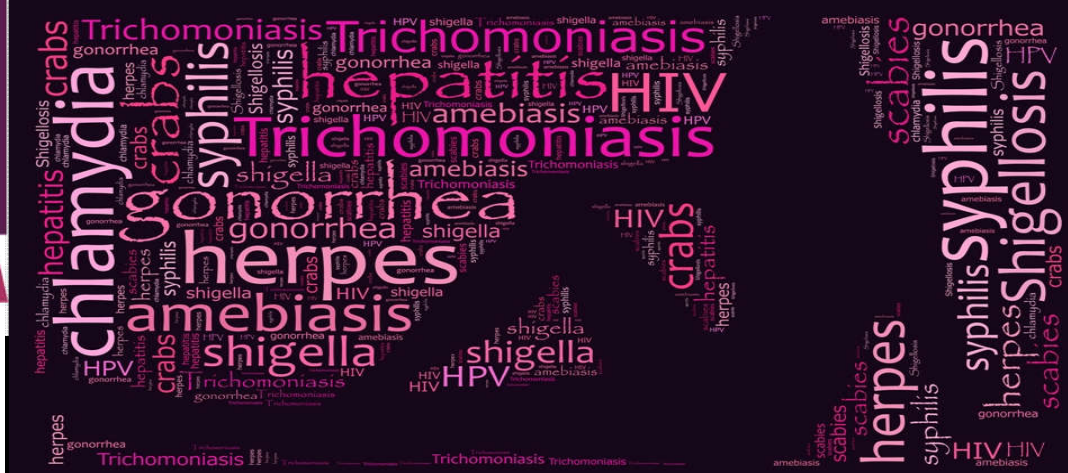
Matthew 5:28 - But I say unto you, That whosoever looketh on a woman to lust after her hath committed adultery with her already in his heart.



GEMS

God's Emergency Medical
 Ministry Services

Heal at Home
 Health Education for Such a Time
 as This in these Last Days
 (314) 939-6759
www.gemsnaturalhealth.wix.com/figs



Feel the Burn?

St. Louis County syphilis rates continue to rise with the highest jump in 5 years. The rate of syphilis cases in St. Louis County increased 42 percent between 2016 and 2017, the largest increase in at least five years, according to data released by the county's health department.

The county saw 202 cases of syphilis last year. That's up from 142 the year before. Experts attribute the increase to people practicing unsafe sex and not knowing enough about symptoms or treatments for the disease. According to the Centers for Disease Control and Prevention, the disease was nearly eliminated a decade ago, but it's reemerged. Rates are rising across the United States, but rates of the sexually transmitted disease have been rising faster in St. Louis County. In between 2015 and 2016, for example, the national per capita rate increased 18 percent; in St. Louis County, it increased 41 percent.



America Gave Black Men And Women Syphilis



Google Tuskegee Experiment



Atlanta HIV rate is at 87% Listed #1 in the United States.

Know ye not that the unrighteous shall not inherit the kingdom of God? Be not deceived: neither fornicators, nor idolaters, nor adulterers, nor effeminate, nor abusers of themselves with mankind, Nor thieves, nor covetous, nor drunkards, nor revilers, nor extortioners, shall inherit the kingdom of God. ~1 Cor. 6:9 - 6:10, **Galatians 5:19** - Now the works of the flesh are manifest, which are [these]; Adultery, fornication, uncleanness, lasciviousness. **So, Don't be hot to trot and avoid the BURN!**

Men who have sex with other men are the most at risk, and the disease often shows up alongside HIV cases. "One of the things we're definitely seeing in St. Louis County is more cases of primary syphilis. But people are still having unsafe sex even when they know they might be infected."

This isn't the first time the city has seen an syphilis outbreak, St. Louis led the country in syphilis rates in the early '90s.

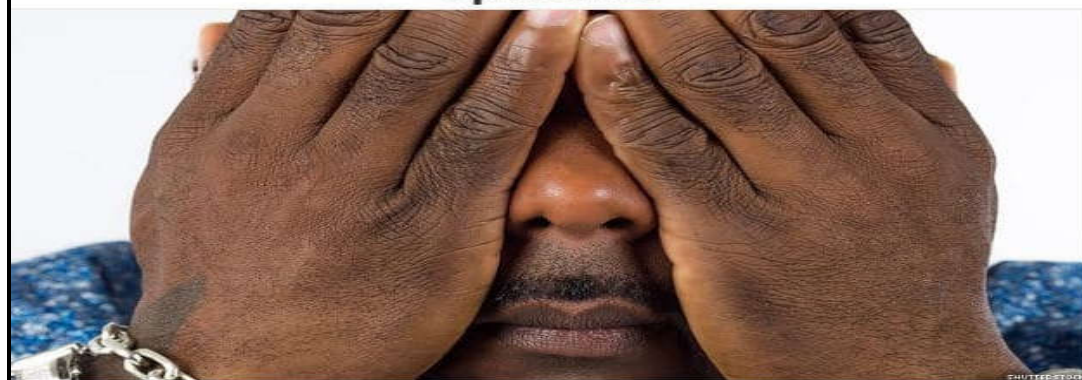
Officials urge every person who is sexually active to get tested for syphilis and other STDs, even if they don't present symptoms, and to use latex condoms during every sexual encounter.



STIs are on the rise in the United States



CDC: HIV Rates In Atlanta Now Officially An Epidemic



'Downtown Atlanta is as bad as Zimbabwe.'